

## GENERAL DESCRIPTION OF MODEL HRC-24-8R

Version 1.0

November 17<sup>th</sup>, 2012



## LEGAL DISCLAIMER AND CONDITIONS OF USE

This document contains information for the HRC-24-8R data kit and accompanying accessories ("Product") is provided "as is." Reasonable effort has been made to make the information in this document reliable and consistent with specifications, test measurements and other information. However, NAL Research Corporation and its affiliated companies, directors, officers, employees, agents, trustees or consultants ("NAL Research") assume no responsibility for any typographical, technical, content or other inaccuracies in this document. NAL Research reserves the right in its sole discretion and without notice to you to change Product specifications and materials and/or revise this document or withdraw it at any time. User assumes the full risk of using the Product specifications and any other information provided.

NAL Research makes no representations, guarantees, conditions or warranties, either express or implied, including without limitation, any implied representations, guarantees, conditions or warranties of merchantability and fitness for a particular purpose, non-infringement, satisfactory quality, non-interference, accuracy of informational content, or arising from a course of dealing, law, usage, or trade practice, use, or related to the performance or nonperformance of any products, accessories, facilities or services or information except as expressly stated in this guide and/or the Product and/or satellite service documentation. Any other standards of performance, guarantees, conditions and warranties are hereby expressly excluded and disclaimed to the fullest extent permitted by the law. This disclaimer and exclusion shall apply even if the express limited warranty contained in this guide or such documentation fails of its essential purpose.

In no event shall NAL Research be liable, whether in contract or tort or any other legal theory, including without limitation strict liability, gross negligence or negligence, for any damages in excess of the purchase price of the Product, including any direct, indirect, incidental, special or consequential damages of any kind, or loss of revenue or profits, loss of business, loss of privacy, loss of use, loss of time or inconvenience, loss of information or data, software or applications or other financial loss caused by the Product (including hardware, software and/or firmware) and/or the Iridium satellite services, or arising out of or in connection with the ability or inability to use the Product (including hardware, software and/or firmware) and/or the Iridium satellite services to the fullest extent these damages may be disclaimed by law and whether advised of the possibilities of such damages. NAL Research is not liable for any claim made by a third party or made by you for a third party.

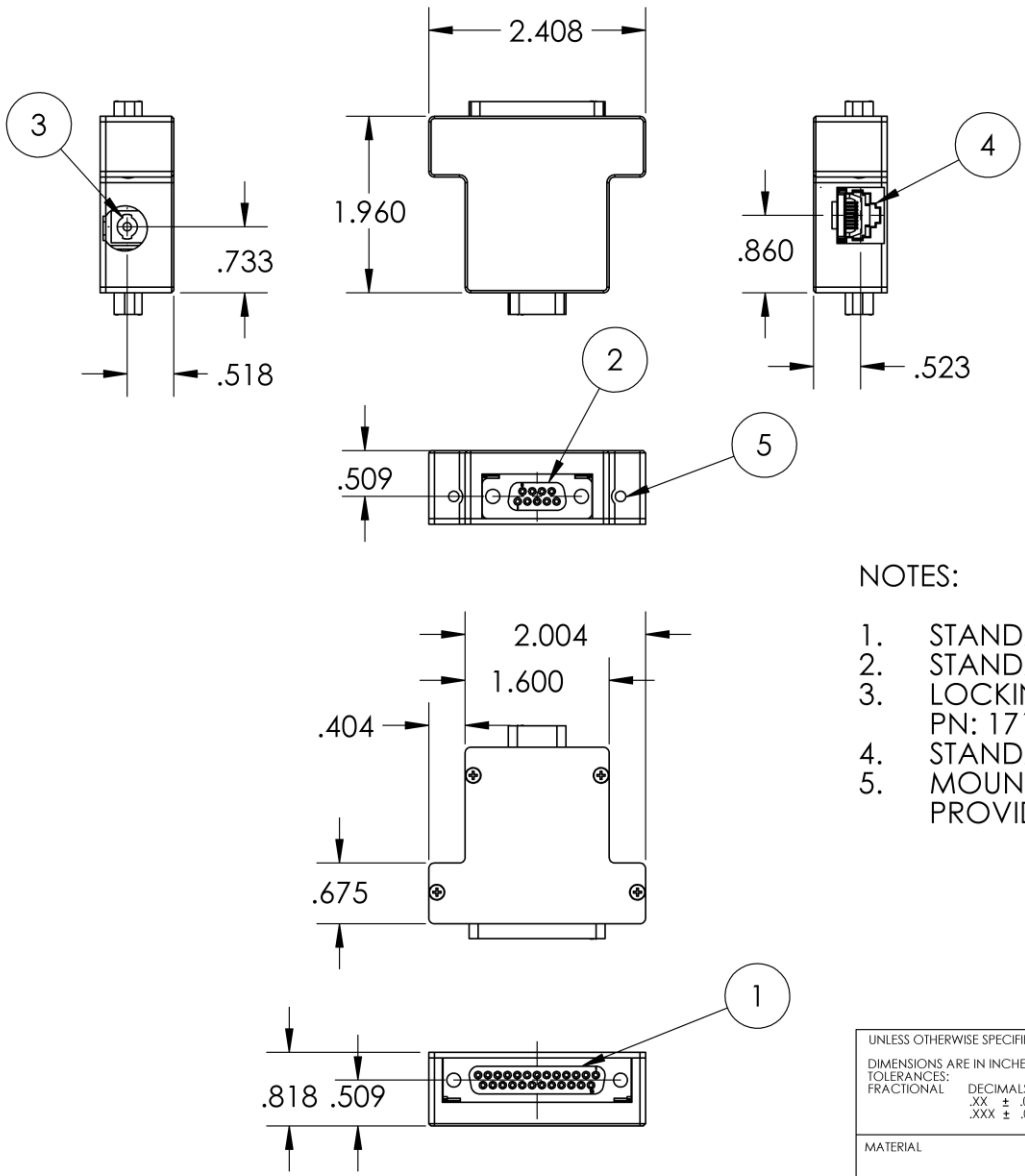
## 1.0 PURPOSE

Model HRC-24-8R is a DB25 data kit designed to work with any of the NAL Research A3LA-R series as shown in Figure 1. The HRC-24-8R allows direct attachment of a DPL handset, a 9-pin RS-232 cable and DC power input to a modem. The DC input provides power to both the modem/tracker as well as to the DPL handset.



**Figure 1.** A3LA-R Connected to a DPL handset and HRC-24-8R data Kit.

REVISIONS				
ZONE	REV.	DESCRIPTION	DATE	APPROVED
	1.0	INITIAL RELEASE	11/15/2012	DG



NOTES:

1. STANDARD DB25 (FEMALE)
2. STANDARD DB9 (FEMALE)
3. LOCKING DC BARREL PLUG. MATES WITH KOBICONN PN: 171-0725-EX
4. STANDARD RJ45 JACK
5. MOUNTING HOLES TO MODEM. 2X 4-40 SOCKETHEAD SCREWS PROVIDED

UNLESS OTHERWISE SPECIFIED: DIMENSIONS ARE IN INCHES TOLERANCES: FRACTIONAL DECIMALS ANGLES .XX ± .01" .XXX ± .005"	CONTRACT NO.		NAL RESEARCH CORP.			
	APPROVALS	DATE				
MATERIAL	DESIGNER E. RODERICK	11/15/12	DRAWING NAME HRC-24-8R			
FINISH	CHECKER		A	CAGE CODE	DWG. NO. 92378	REV 1.0
	APPROVED: PRODUCTION		SCALE: 1:2		SHEET: 1 OF 1	
	APPROVED: ENGINEERING D. GAIBROIS	11/15/12				